

ITINERARY



Immigration

Year 6 Program

Learning Intentions

Students study the role of immigration in the development of Australia by engaging in theatre-in-education to:

- Explore the journeys of immigrants in Colonial times to analyse and understand motivations, difficulties, and hopes and dreams of passengers' on-board vessels
- Participate in a drama experience at Lytton Quarantine Station by placing themselves in role of an immigrant being processed into a new country
- Evaluate information from primary and secondary sources including photographs, maps, oral histories, objects and heritage buildings, covering a period from the 1850's to the 1950's to discuss and justify immigration
- Interrogate values and beliefs to evaluate understandings and opinions on why people choose to immigrate to Australia, both in the past and today, and discuss their contributions to Australian society

"Inspiring Champions for the Bay"

Time	Activity
9.15	Students board the boat 'Inspiration' at the William Gunn Jetty, Wyvernleigh Cres, Manly. <i>Student inquiry:</i> What was the journey like for immigrants as they made their new home in Queensland, Australia in the mid 1800's? <i>Generate ideas:</i> Focus questions explored throughout the day exploring the push and pull of immigration: <ul style="list-style-type: none"> • Where did people emigrate from? • Why did people choose to immigrate? • What was the contribution of immigrants to Australian society?
9.20-10.20	<i>Gathering information:</i> While travelling past the bay islands, students are immersed in drama and activities focusing on the arrival of immigrants in Moreton Bay during the Colonial period of Queensland. Quarantine, isolation, and focus questions are considered.
10.20-10.45	Students enjoy morning tea while travelling along the river and past the Port of Brisbane. Move forward in time to post World War I and land at Lytton Quarantine Station, where students are placed in an unfolding drama in the year 1922.
10.45-12.30	<i>Gathering information and applying understandings</i> Students, in role, take part in a dramatic re-enactment of the processing procedure for new migrants in various locations throughout the Quarantine station. Students reflect on ideas of 'belonging' and question two fictional immigrant characters to gain an understanding of their desire to immigrate.
12.30-1.00	Lunch and toilet break
1.00-1.40	Students, transported to post WWII, are involved in drama, meeting the Immigration Officer and previous immigrants who have made their life in Australia. <i>Gathering Information:</i> Students use historical documents to create an understanding of a post WWII immigrant and discuss this war, the aftermath, and reasons leading to mass immigration.
1.40-2.00	<i>Applying understandings:</i> Students assume the role of families arriving in Australia in 1949. After immersion in the processing process as newly arriving immigrants of this time, needs for successful settlement are discussed. <i>Synthesising Information and student reflection:</i> Reflect on the significance of immigration in building this nation in the past, present and the future.
2.15	Board bus to return to school.



Moreton Bay
ENVIRONMENTAL EDUCATION CENTRE
Inspiring Champions for the Bay



Queensland Government

(07) 3906 9111
www.moretoneec.eq.edu.au
admin@moretoneec.eq.edu.au

ITINERARY

Students and adults will need:

- Covered footwear
- Sun-safe clothing and hat
- Sunscreen and insect repellent already applied
- Water bottle
- Morning tea and lunch

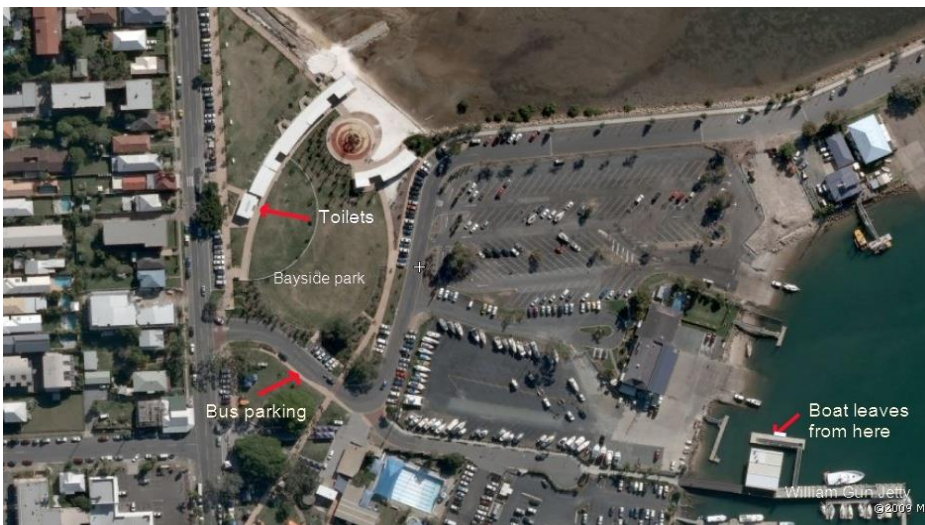
Litter-free Lunch

We encourage students and staff to pack a litter-free lunch. Everything in it can be re-used, composted or recycled. Drinks are brought in refillable bottles.

Location map

Arrival

Students to meet Moreton Bay EEC teachers at Bayside Park and walk to the William Gunn Jetty to board the boat.

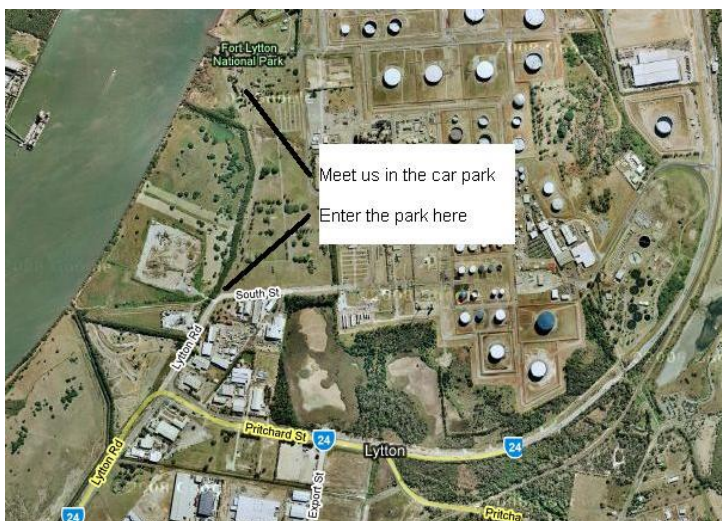


Bus parking area –
Bayside Park, corner
The Esplanade and
Fairlead Cres, Manly.

For Boat Program –
Walk to William Gunn
Jetty, Manly

Departure

Students will depart from Fort Lytton National Park at 2:15pm. Please organise for the bus to pick students up at Fort Lytton NP, corner of Lytton Road and South Street, Lytton. **Please ensure your bus provider understands that the pick-up location is different from the drop off location, as this can be an unusual arrangement for them.**



Moreton Bay
ENVIRONMENTAL EDUCATION CENTRE
Inspiring Champions for the Bay



**Queensland
Government**

(07) 3906 9111
www.moretoneec.eq.edu.au
admin@moretoneec.eq.edu.au